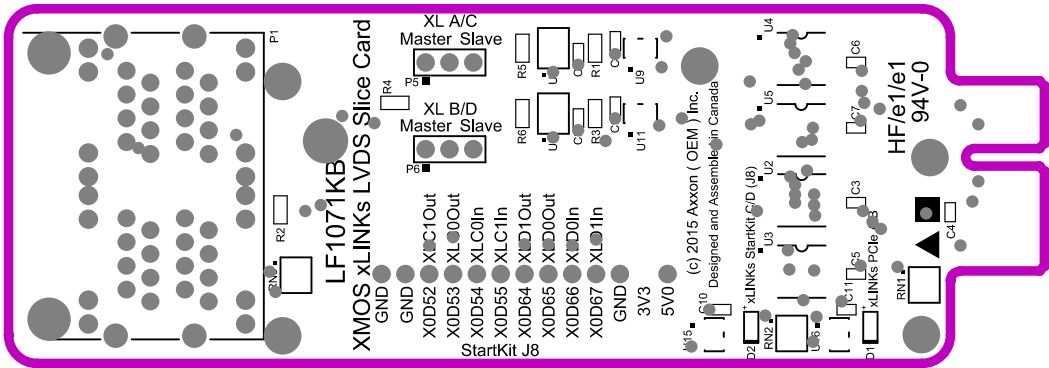


TOP SILKSCREEN		GND PLANE											
DATE:	9/15/2015	TIME:	4:38:09 PM										
INT'L CIRCUITS #	IC1071KB												
CUSTOMER	AXXON (OEM) INC.												
BOARD NAME	XMOS xLINKs LVDS Slice Card Rev A												
CUSTOMER BRD #	LF1071KB												
CONTRACT #	IC1071KB			TOP SILK			GROUND						
PCB FILENAME	IC1071KB_A.PcbDoc												
APERTURE FILE	RS274X EMBEDDED												
N/C DRILL FILE	IC1071KB.NCD												
PHOTO PLOT FILENAME	IC1071KB.xxx			.GTO			.GP1						
PLOTFILE EXTENSION LEGEND													

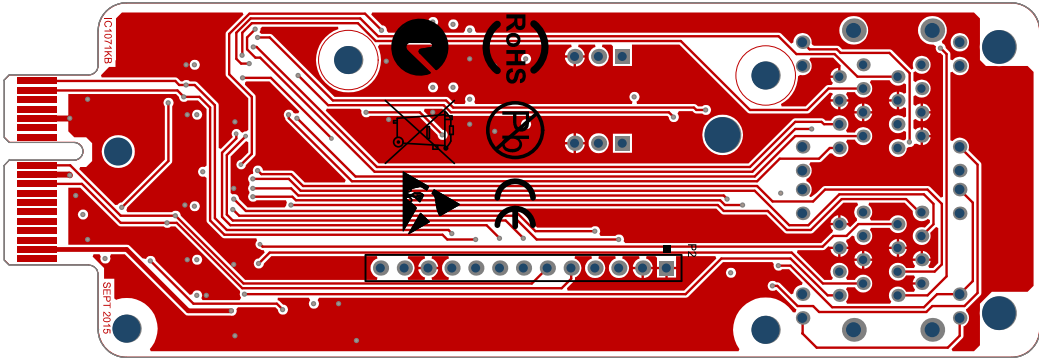


TOP SILKSCREEN				PWR PLANE																			
DATE:	9/15/2015	TIME:	4:38:11 PM																				
INT'L CIRCUITS #	IC1071KB																						
CUSTOMER	AXXON (OEM) INC.																						
BOARD NAME	XMOS xLINKs LVDS Slice Card Rev A																						
CUSTOMER BRD #	LF1071KB																						
CONTRACT #	IC1071KB			TOP SILK					POWER														
PCB FILENAME	IC1071KB_A.PcbDoc																						
APERTURE FILE	RS274X EMBEDDED																						
N/C DRILL FILE	IC1071KB.NCD																						
PHOTO PLOT FILENAME	IC1071KB.xxx			.GTO					GP2														
PLOTFILE EXTENSION LEGEND																							

BOTTOM SILKSCREEN

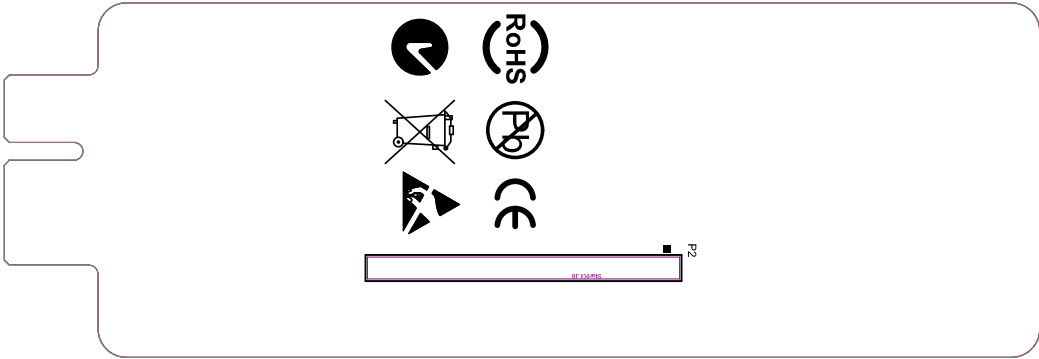
FILENAME									
IC1071KB.xxx									
PHOTO PLOT									
IC1071KB.NCD									
APERTURE FILE									
R2374X EMBEDDED									
PCB FILENAME									
IC1071KB_A.PcbDoc									
CONTRACT #									
IC1071KB									
CUSTOMER BRD #									
LF1071KB									
BOARD NAME									
XMO5 xLINKs LVDS Slice Card Rev A									
CUSTOMER NAME									
AXXON (OEM) INC.									
CUSTOMER									
INT'L CIRCUITS #									
IC1071KB									
TIME: 4:38:15 PM									
DATE: 09/25/04									

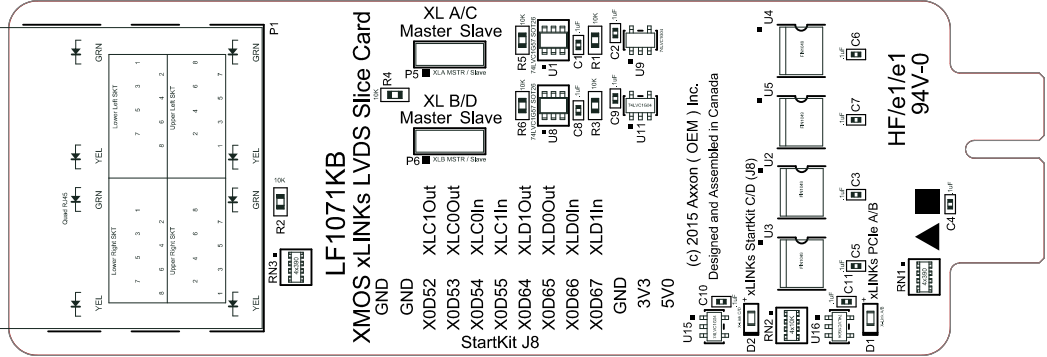
BOTTOM



BOTTOM SILKSCREEN **BOTTOM ASS'Y**

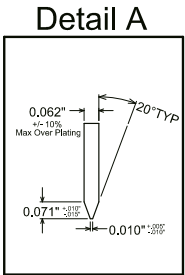
PLOT FILE EXTENSION LEGEND									
FILENAME	IC1071KB.xxx								
	IC1071KB.NCD								
	R2374X EMBEDDED								
	IC1071KB_A.PcdDoc								
	IC1071KB								
CONTRACT #	LF1071KB								
CUSTOMER BRD #									
BOARD NAME	XMO2 xLINK2 LVD2 Slice Card Rev A								
CUSTOMER	AXXON (OEM) INC.								
INT'L CIRCUITS #	IC1071KB								
DATE: 01/25/2012	TIME: 4:38:14 PM								





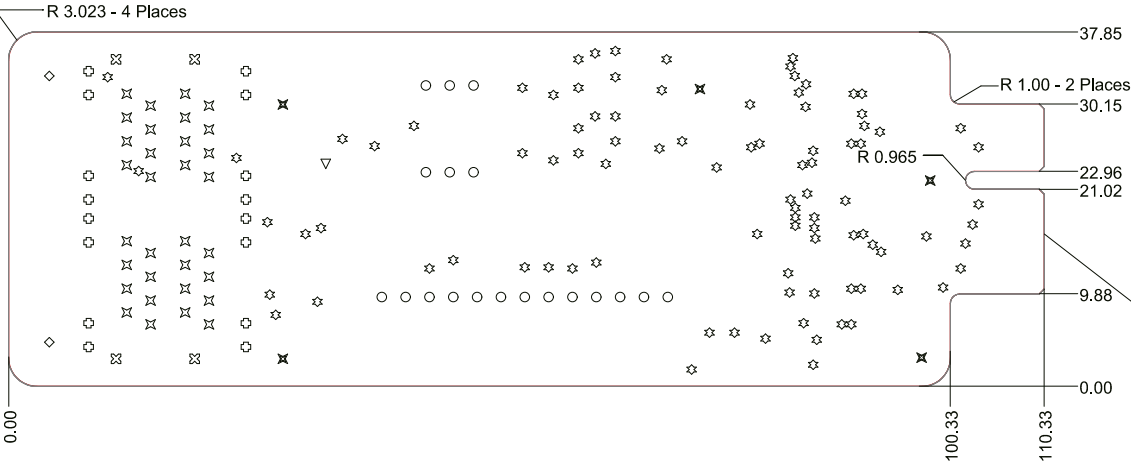
TOP SILKSCREEN		TOP ASS'Y									
DATE:	9/15/2015	TIME:	4:38:15 PM								
INT'L CIRCUITS #		IC1071KB									
CUSTOMER		AXXON (OEM) INC.									
BOARD NAME		XMOS xLINKs LVDS Slice Card Rev A									
CUSTOMER BRD #		LF1071KB									
CONTRACT #		IC1071KB									
PCB FILENAME		IC1071KB_A.PcbDoc									
APERTURE FILE		RS274X EMBEDDED									
N/C DRILL FILE		IC1071KB.NCD									
PHOTO PLOT FILENAME		IC1071KB.xxx									
		PLOTFILE EXTENSION LEGEND									

Symbol	Hit Count	Finished Hole Size	Plated	Hole Type	Physical Length	Rout Path Length
▽	1	150.00mil (3.810mm)	NPTH	Round		
◇	2	141.73mil (3.600mm)	NPTH	Round		
⊗	4	62.99mil (1.600mm)	PTH	Round		
✕	5	118.00mil (2.997mm)	NPTH	Round		
⊙	16	41.34mil (1.050mm)	PTH	Round		
○	19	38.00mil (0.965mm)	PTH	Round		
✕	32	35.43mil (0.900mm)	PTH	Round		
☆	94	12.00mil (0.305mm)	PTH	Round		
	173 Total					



NOTES:

1. CIRCUIT BOARD MUST BE RoHS, HALOGEN AND Pb-FREE COMPLIANT.
2. CERTIFICATE OF RoHS COMPLIANCE TO BE INCLUDED WITH EACH SHIPMENT.
3. MATERIAL : UL94V-0 FR-4 - TU-862 HF TYPE OR APPROVED EQUIVALENT PER IPC-4101. .062 INCH FINISHED THICKNESS WITH 1 OZ. COPPER - ALL LAYERS.
4. FINISH - SMOBC UNLESS OTHERWISE SPECIFIED.
5. SOLDER MASK TO BE GREEN, GLOSS FINISH, HALOGEN FREE, LPI TYPE
6. ALL PLATED THROUGH HOLES SHALL BE PLATED WITH A MINIMUM OF .001 INCH THICK COPPER. HOLE DIMENSIONS APPLY AFTER PLATING THROUGH.
7. VIAS WITH NO SOLDER MASK OPENING IN GERBER FILE TO BE TENTED OR PLUGGED WITH SOLDER MASK.
8. MANUFACTURER'S UL # AND DATE CODE REQUIRED TO APPEAR IN WHITE INK. SUBMIT COPY OF GERBER WITH LOGO TO CUSTOMER IN .PDF FILE FORMAT FOR APPROVAL.
9. LEGEND TEXT PERMISSABLE OVER VIAS TENTED WITH SOLDER MASK
10. EXPOSED PADS TO BE FINISHED WITH ENIG PER IPC-4552.
11. CONNECTOR CONTACTS SHALL BE PLATED WITH GOLD. MINIMUM KNOOP HARDNESS OF 140. GOLD PLATING SHALL BE A MINIMUM OF .000010 INCH AND A MAXIMUM OF .000015 INCH THICKNESS.



FAB NOTES

DATE:	9/15/2015	TIME:	4:38:18 PM											
INT'L CIRCUITS #	IC1071KB													
CUSTOMER	AXXON (OEM) INC.													
BOARD NAME	XMOS xLINKs LVDS Slice Card Rev A													
CUSTOMER BRD #	LF1071KB													
CONTRACT #	IC1071KB										DRILL DWG			
PCB FILENAME	IC1071KB_A.PcbDoc													
APERTURE FILE	RS274X EMBEDDED													
N/C DRILL FILE	IC1071KB.NCD													
PHOTO PLOT FILENAME	IC1071KB.xxx										.GD1			
PLOTFILE EXTENSION LEGEND														

LAYER STACKUP

